

## REPORT

### NONMETRIC SKULL DIVERGENCE IN THE OTTER - ASSESSING GENETIC INSULATION OF POPULATIONS

H ANSORGE<sup>1</sup>, M. STUBBE<sup>2</sup>

<sup>1</sup> Staatliches Museum für Naturkunde Görlitz, PF 300154, D-02806 Görlitz, Germany

<sup>2</sup> Zoologisches Institut der Martin-Luther-Universität Halle, Domplatz 4, D-06108 Halle/S., Germany

**ABSTRACT:** The craniometric variation and non-metric skull divergence between populations of the otter *Lutra lutra* (Linné, 1758) were studied using more than 430 skulls from different regions of Eastern Germany. No direct regional differences in skull measurements could be established for this area. The comparison of the morphological variation by non-metric skull characters adduces not or unimportant differentiations for most regions. Otter populations with greater geographic distances have partly higher measures of divergence. But only the population from the Baltic coast stand out against each other with a relative important epigenetic distance. Until now there does not exist a general reproductive and genetic insulation between the otter populations of Eastern Germany.

#### INTRODUCTION

Genetic insulation is one of the most reliable indications to show where species are endangered or on further decrease. The situation of the otter *Lutra lutra* (Linné, 1758) in Western and Central Europe gives an example. In many parts of this area the population splittings have been followed by considerable decrease or extinction (Reuther, 1992).

Until now in the eastern part of Germany there have been otter occurrences of high density and vital condition. Obviously the important losses of otters mainly by road killing seems to be compensated by healthy population parts with stable reproduction. However, recent surveys provide a picture of patchy otter distribution in East Germany too (Labes et al., 1989; Ansorge and Striese, 1993; Dolch et al., 1993). In addition, there is little knowledge of the problem that there were already genetic differences between these populations keeping not directly in reproductive contact.

Besides cytogenetical and biochemical techniques the classic morphological skull studies can be used to obtain information about the populations divergence. Checking qualitative skull characters the evaluation of "epigenetic distances" between the populations is able to solve the question above.

#### MATERIAL AND BASIC METHODS

The study is based on 430 skulls of the river otter originating from several natural regions of East Germany (Figure 6).

Most of the whole material was collected as road victims over the last ten years by the Zoologisches Institut der Universität Halle, the Museum der Westlausitz Kamenz and the Staatliches Museum für Naturkunde Görlitz.

**Table 1.** Specimens by Lände in which they were collected

OL	Oberlausitz	216
NL	Niederlausitz	58
OR	Oderregion	47
MB	Mark Brandenburg	40
ME	Mecklenburg	47
BC	Baltic coast	22

The studied otters were classified into three "relative age classes" (RAC) after Reig and Ruprecht (1989) grouping the skulls with identical stage of development. This classification depends on the general obliteration of sutures, the development of the postorbital constriction, the sagittal crest, the bone deposition around canine alveoles and the surface structure of brain-pan. The abrasion of teeth seems to be unsuitable even for an approximate age estimation of the otter skulls. According to the methodic experiences of Bree et al. (1966), Stubbe (1969), Heggberget (1984), Skarén (1987) and Uthleb et al. (1992) the relative age classes 1, 2 and 3 stand for juvenile, subadult and adult specimens. In addition most adult otters were aged by the configuration of incremental cementum lines applying an efficient method of low speed sawing (Driscoll et al., 1985; Ansorge, in press).

To characterize potential differences in skull size 10 linear dimensions (Table 2, Figure 1) were used corresponding with the measurements defined by Driesch (1976).

**Table 2.** Measurement Dimensions (see also Figure 1)

1	( <i>cb</i> )	condylobasal length: posterior margin of condyli occipitales - prosthion
2	( <i>blbs</i> )	pharyngeal base length of the brain-stem: basion - suture between pterygoid and palatinum
3	( <i>zb</i> )	zygomatic breadth: zygion - zygion
4	( <i>bb</i> )	breadth of braincase: euryon - euryon
5	( <i>sh</i> )	skull height without sagittal crest: base of os occipitale - upper point of braincase beside the crista sagittalis
6	( <i>utr</i> )	length of upper tooth row: alveolar distance C-M <sup>1</sup>
7	( <i>al</i> )	angular length: infradentale - processus angularis
8	( <i>ltr</i> )	length of lower tooth row: alveolar distance C-M <sub>2</sub>
9	( <i>M<sub>1</sub>l</i> )	length of M <sub>1</sub> : greatest length of M <sub>1</sub>
10	( <i>M<sub>1</sub>b</i> )	breadth of M <sub>1</sub> : greatest breadth of M <sub>1</sub>

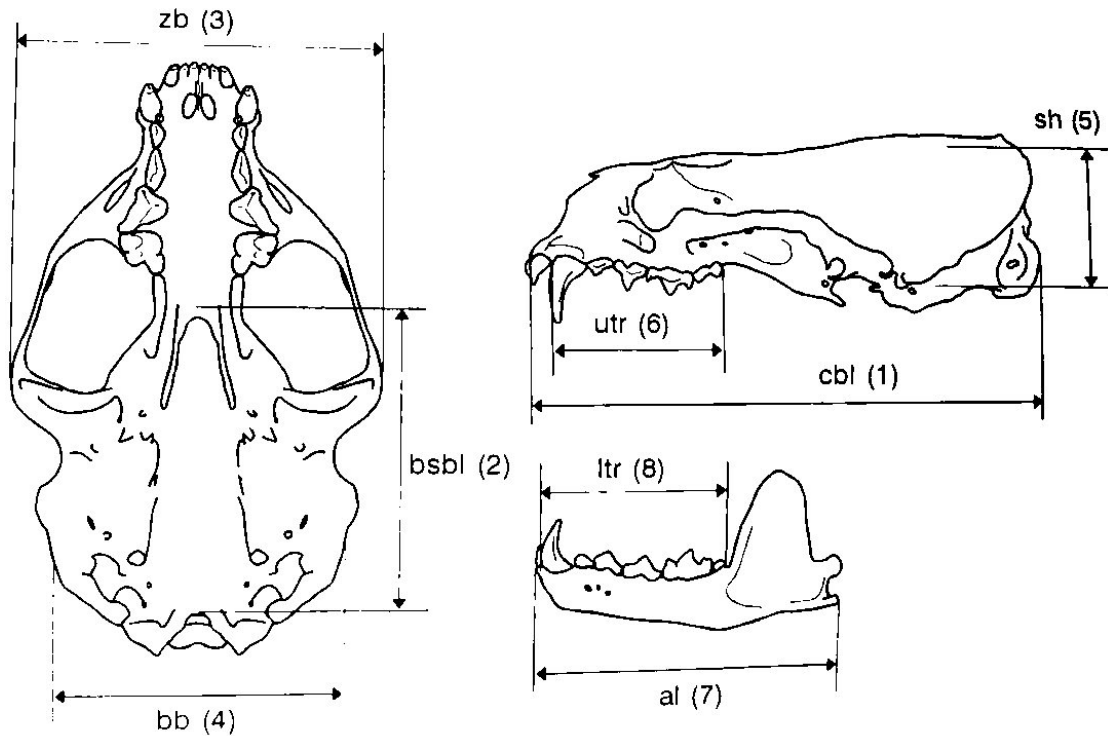


Figure 1. Skull measurements of the otter

All data were statistically processed by the mean ( $\bar{x}$ ), the range ( $x_{\max}$ ,  $x_{\min}$ ), the standard deviation ( $s$ ), the variability coefficient ( $v=100 s/\bar{x}$ ) and Student's t-test to secure significance of mean differences ( $\alpha < 0.05$ ). As well each population group was computed separately according to sexes, age classes and regions. Metric similarity of the region samples was calculated by the "average taxonomic distance" (ATD) based on sample means of adult males. Clustering on the ATD matrix was performed by "unweighted pair group method with arithmetic average" (UPGMA) both using NTSYS-pc (Numerical Taxonomy and Multivariate Analysis System) (Rohlf, 1994).

To determine the morphological differentiation with regard to the epigenetic distances, 12 nonmetrical traits were checked. The characters have been chosen according to the rare investigations on other carnivores (Sjovold, 1977; Wiig and Lie, 1984; Wiig and Andersen, 1988; Ansorge, 1992) and own preliminary studies (Table 3, Figure 2).

Table 3. Non-Metric Traits (see also Figure 2)

No.	Abbreviation	Trait
1	(Feth)	foramina ethmoidalia completely separated
2	(Ffr)	foramen frontale present
3	(Ccd)	canalis condylaris double
4	(Ccv)	canalis condylaris open ventrally
5	(laFbt)	lateral accessory foramen bullae tympani present
6	(maFbt)	medial accessory foramen bullae tympani present
7	(Fosd)	foramen ovale subdivided
8	(eFov)	emissary foramen beside the foramen ovale present
9	(P <sup>1</sup> )	first upper premolar missing
10	(aFmd)	accessory anterior foramen mandibulare present
11	(Fcor)	foramen coronoidale present
12	(M <sub>2</sub> )	last lower molar missing

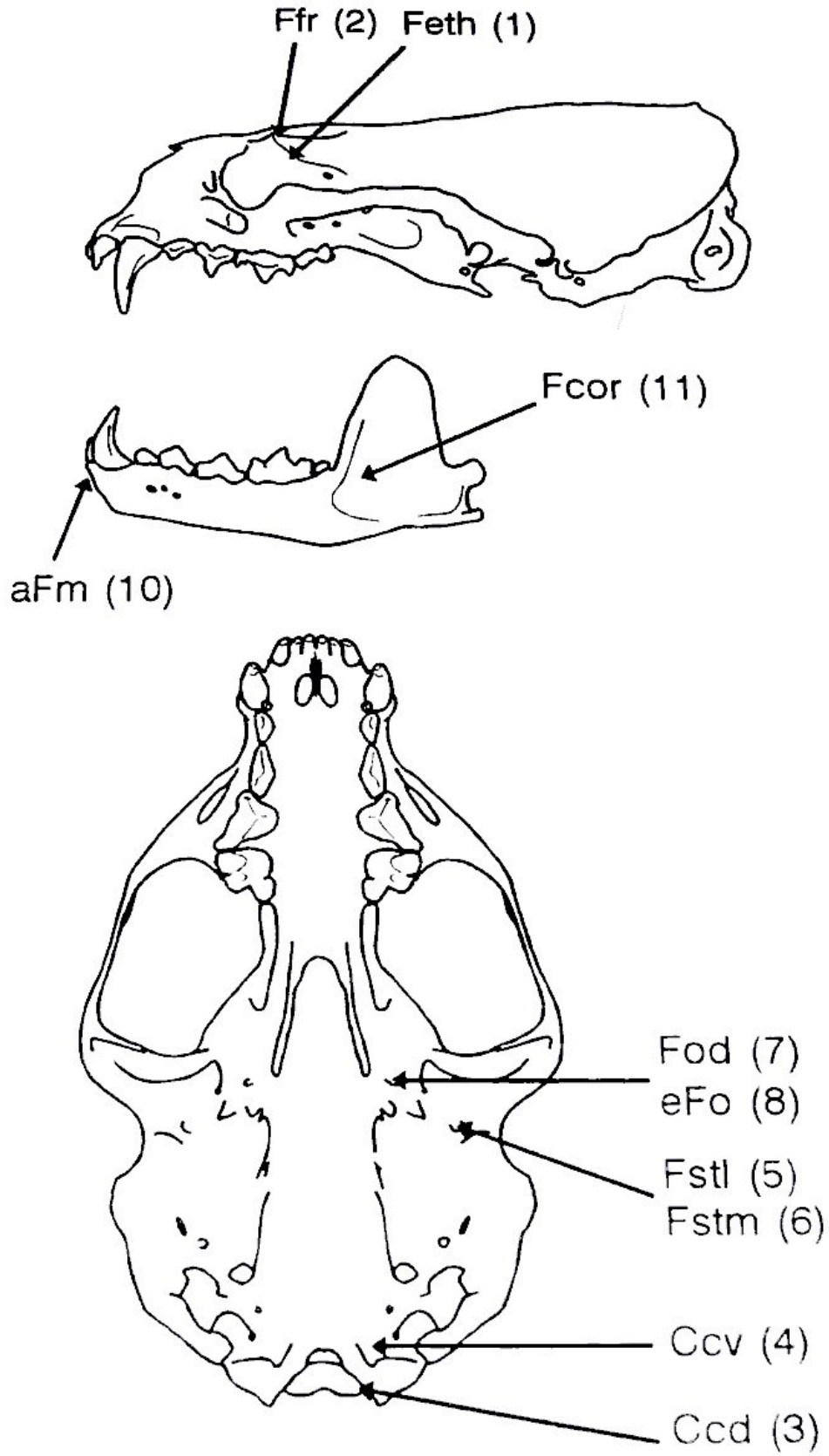
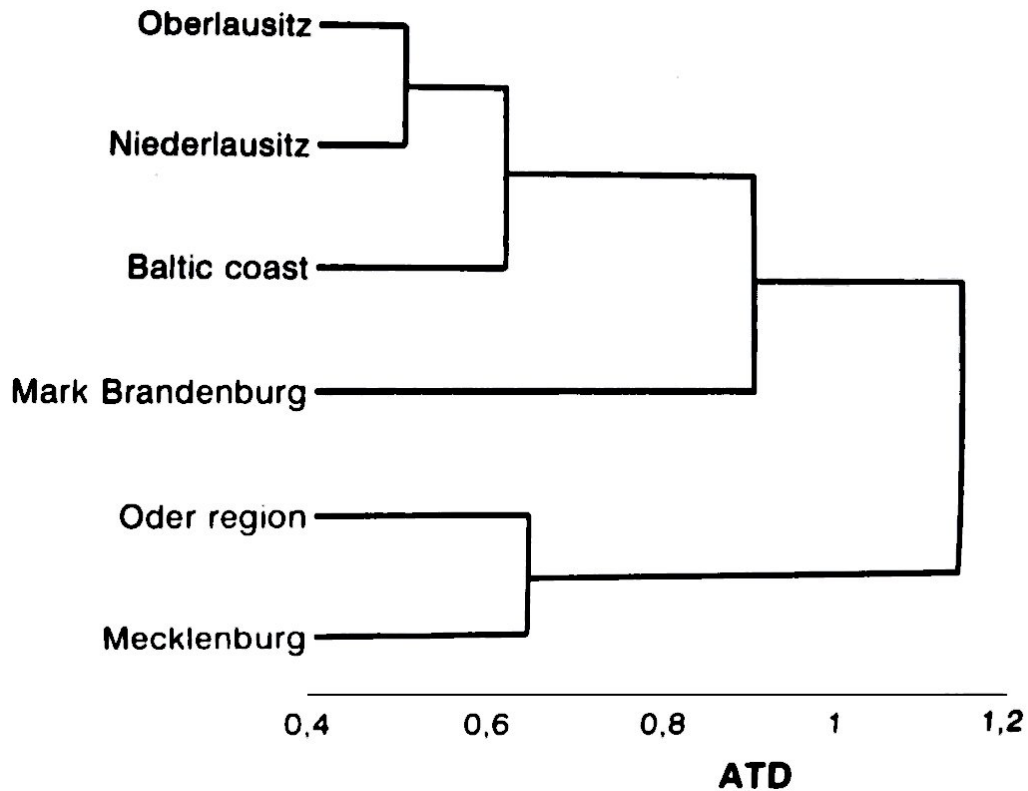


Figure 2. Positions of nonmetric traits in the otter skull

Bilateral traits were taken from both sides of the skull and separately as well as together calculated. The frequencies of trait expressions were compared by the chi-square test including the analyse of homogeneity in age and sex. For computing the epigenetic distances the formula of "mean measure of divergence" (MMD) proposed and derived by Sjøvold (1977) could be used. Variance and standard deviation ( $S_{MMD}$ ) of the MMD are necessary to prove statistic significance by  $MMD > 2 S_{MMD}$ . Tree matrix and phenogram of MMD were computed by cluster analysis (UPGMA of NTSYS-pc).



**Figure 3.** UPGMA dendrogram derived from ATD between sample means of adult male otters

The size differences can be illustrated by the range of variation in skull length (*cbi*) in Figure 4.

condylobasal length ♂ rac3

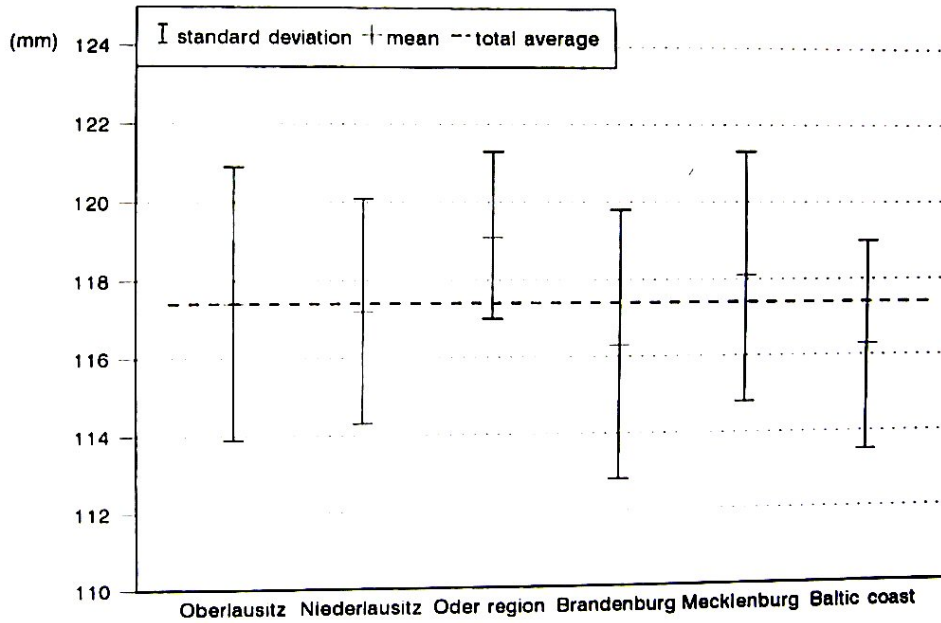


Figure 4. Range of variation of condylobasal length (cbl) among the otter populations

Table 4: Sample means of skull measurements for adult male otters (RAC 3) from different regions

	OL	NL	OR	MB	ME	BC
<i>Cbl</i>	117.56	117.18	119.11	116.29	118.05	116.26
<i>Blbs</i>	56.21	57.11	56.68	56.88	56.18	56.03
<i>Zb</i>	73.42	73.78	75.93	75.23	75.34	73.36
<i>Bb</i>	50.60	51.29	52.48	52.07	52.23	50.19
<i>Sh</i>	35.09	35.74	35.78	35.72	35.72	35.31
<i>Utr</i>	35.95	35.72	35.36	34.98	35.46	35.21
<i>Al</i>	74.95	75.41	76.06	75.42	77.19	74.77
<i>Ltr</i>	43.47	43.91	43.36	42.88	44.33	43.76
<i>M<sub>jl</sub></i>	13.44	13.38	13.53	13.74	13.64	13.80
<i>M<sub>jb</sub></i>	6.74	6.83	6.89	6.90	6.96	7.15

Table 5a: Skull measurements of adult otters (RAC 3) from Eastern Germany (males RAC 3)

	x	s	v	x <sub>min</sub>	x <sub>max</sub>	n
<i>Cbl</i>	117.41	3.31	2.82	106.1	124.3	102
<i>Blbs</i>	56.33	2.24	3.97	51.3	61.4	101
<i>Zb</i>	73.87	3.11	4.21	65.9	81.5	96
<i>Bb</i>	51.09	1.82	3.56	45.8	56.1	101
<i>Sh</i>	35.43	1.24	3.50	32.5	38.2	101
<i>Utr</i>	35.68	1.21	3.40	32.4	39.5	121
<i>Al</i>	75.19	2.84	3.78	66.9	82.0	132
<i>Ltr</i>	43.42	1.40	3.23	38.4	47.9	138
<i>M<sub>jl</sub></i>	13.55	0.68	5.05	11.3	15.4	145
<i>M<sub>jb</sub></i>	6.82	0.34	4.91	5.9	7.7	147

**Table 5b:** Skull measurements of adult otters (RAC 3) from Eastern Germany (females RAC 3)

	x	s	v	x <sub>min</sub>	x <sub>max</sub>	n
<i>Cbl</i>	109.57	3.19	2.91	104.1	121.0	64
<i>blbs</i>	52.70	1.93	3.65	48.1	57.5	63
<i>zb</i>	67.33	2.53	3.76	61.8	74.8	58
<i>bb</i>	48.61	1.51	3.12	45.5	52.9	64
<i>sh</i>	33.36	1.46	4.38	29.8	38.0	62
<i>utr</i>	33.41	1.10	3.30	30.4	36.9	80
<i>al</i>	68.88	2.29	3.32	63.5	76.9	91
<i>ltr</i>	40.28	1.19	2.96	37.5	44.2	95
<i>M<sub>1l</sub></i>	12.71	0.71	5.57	10.5	14.4	98
<i>M<sub>1b</sub></i>	6.36	0.25	3.93	5.8	7.1	97

The evaluation of nonmetric characters yielded seven features with sufficient regional differences determined by the MMD (mean measure of divergence) – Table 6.

**Table 6:** Traits with significant regional differences

foramina ethmoidalia completely separated	( <i>Feth</i> 1)
foramen frontale present	( <i>Ffr</i> 2)
canalis condylaris double	( <i>Ccd</i> 3)
canalis condylaris open ventrally	( <i>Ccv</i> 4)
foramen ovale subdivided	( <i>Fosd</i> 7)
emissary foramen beside the foramen ovale present	( <i>eFov</i> 8)
foramen coronoidale present	( <i>Fcor</i> 11)

But three of them (*Feth*, *Ffr*, *Fcor*) had to be excluded from further investigation because sex or age dependence was significantly proved for these traits.

The remaining nonmetric characters contributed to the computation of MMD (mean measure of divergence) for the different regions listed in Table 7. There is a variable morphological differentiation of the otters among the studied area. Every sample shows significant distance to at least one each other. However most of the MMD amount to only low degree except the otters from the Baltic coast. They have the greatest and significant distances to all the other samples. This is confirmed by the UPGMA clustering of the MMD matrix in Figure. 5. The four southern natural regions Oberlausitz, Niederlausitz, Oder region and Mark Brandenburg form a group with low differentiation. In contrast the Baltic coast population is clearly separated from the others.

**Table 7:** Mean measure of divergence (MMD) matrix of the otter samples from different regions of Eastern Germany

	OL	NL	OR	MB	ME
NL	0.025*				
OR	0.012	0.016			
MB	0.035*	0.001	0.001		
ME	0.076*	0.015	0.028	0.054*	
BC	0.143*	0.060*	0.161*	0.075*	0.088*

\* significant difference

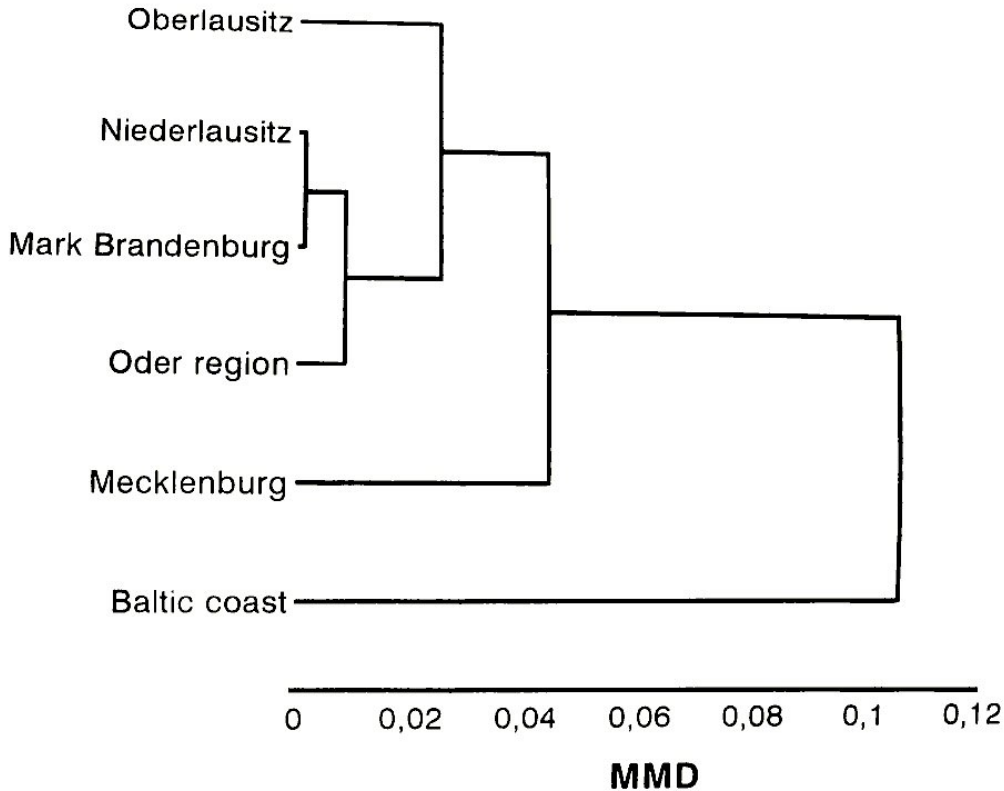


Figure 5: UPGMA dendrogram of MMD between the otters of the six natural region

In addition the epigenetic distance between the western and the eastern part of the Oberlausitz pondland was checked to receive a methodical standard value. As expected the low MMD = 0.03 ( $S_{MMD} = 0.01$ ) indicates the level of populations being closed or closely related as well as emphasizes the suitability of the method.

Between the studied populations there are only small differences in skull size showing statistical significance in few measurements. The measure means in Table 4 (male RAC 3) allow the indication of a not directed size pattern. Therefore the complete basic statistic of all adult otters from the studied area is given in Table 5.

In the mammalogy morphometric differences are favorably used as criteria for taxonomic classification below the species level. But these are based as on genetically fixed morphological variation as also on the modifications induced by environmental factors in a broad sense. In this account there could appear size differences between the animals of adjoining populations without any taxonomic relevance.

Thus the studied skull samples of the otter from Eastern Germany show no clinal variation but a mosaic-like size pattern. These regional differences in skull size seems to be compensated in greater distances (Figure 4). Surely the semiaquatic habits of the otter equalize the unknown factors system affecting body size. According with this Hysing-Dahl (1959) and Zejda and Voskar (1987) remark the lack of regional variability in Norwegian and Czechoslovakian otters.

There are only few useful series of measures from other parts of the European area to estimate the geographic variation of the species (Norway: Hysing-Dahl, 1959;



Czechoslovakia: Zejda and Voskar, 1987; Central Finland: Skarén, 1987; Belorussia: Sidorovic, 1990; European part of Russia: Zejda and Voskar, 1987; Germany: present study). Considering the restrictions by age and sex no clinal variation can be detected in relation to otters of Eastern Germany. Certainly the skull size of the otter is not sufficient to indicate separated populations.

To evaluate geographic differentiation of mammal populations further detailed findings have been adduced by the study of qualitative morphological skull characters. They are of different biological relevance than dimensions of the skull. These non-metrical traits seems to be slightly influenced by environmental factors. Being affected by genetic components the occurrence of the qualitative features does not randomly arise. For the estimation of the traits heritability see also Hilborn (1974), Berry (1975), Korey (1980) and Richtsmeier and McGrath (1986). However the morphological differentiation by non-metric characters gives a certain measure of the epigenetic populations distance.

The results obtained by this method show a largely different view than the craniometric variation among the East German otters (compare Figure 3 with Figure 5). Considering the divergence grouping (Figure 5) and the geographic situation (Figure 6) there is a cluster of four natural regions in the middle and southern part of the studied area. These regions show just as low epigenetic distances as the natural units within the Oberlausitz do it (see above). Therefore the otters of these areas do not belong to separate populations and live in reproductive connection.

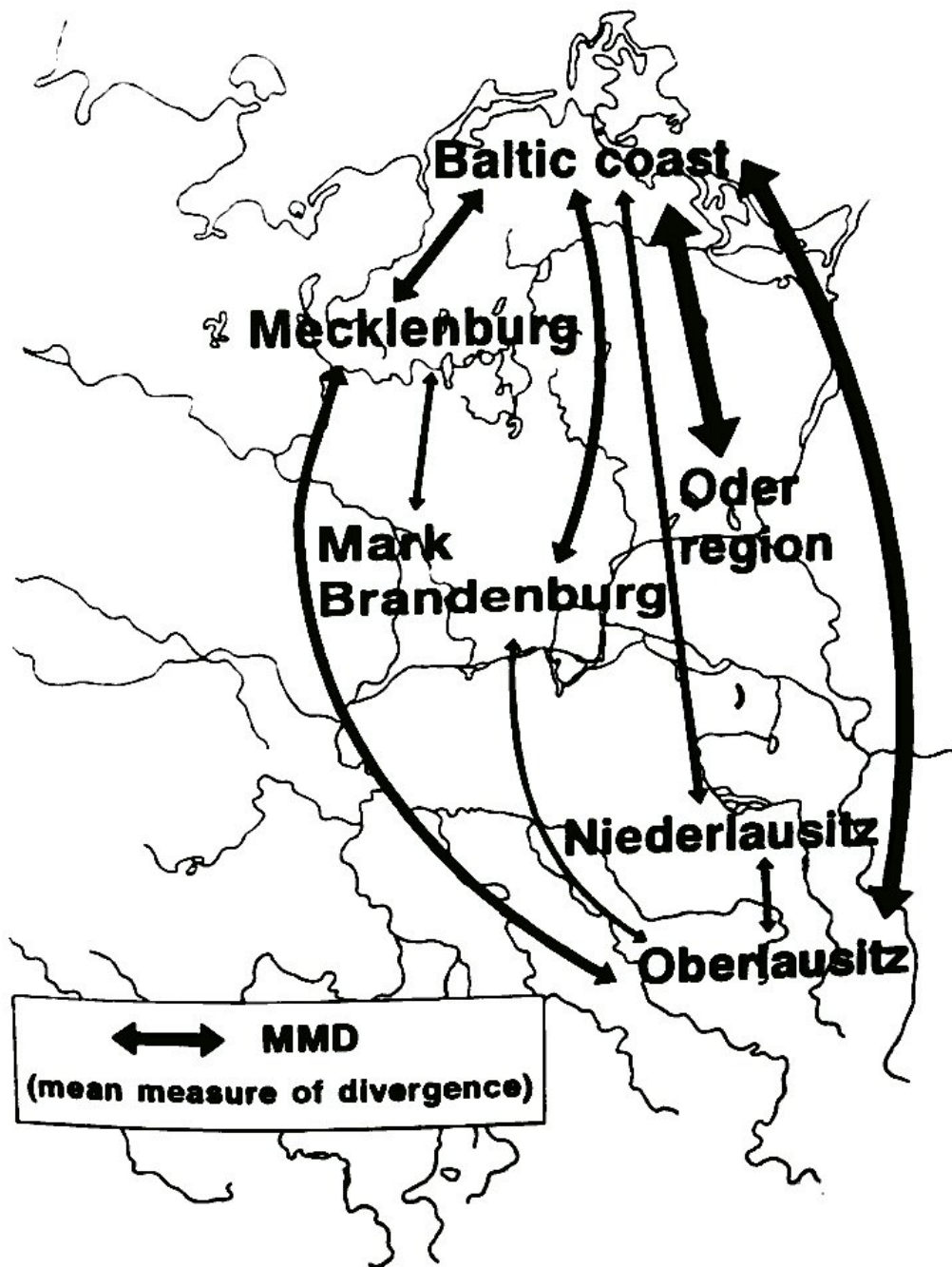


Figure 6: Epigenetic distances of the otter populations by non-metric characters

But unexpected results were established by comparing morphological skull differentiation between the Baltic coast and the inland populations. There is a high degree of divergence segregating the otters of the coast from all the others. The large epigenetic distances point to a lower reproductive contact.

Similar morphological differences were found by Sidorovich (1990) between the otter populations of two river systems in Byelorussia. But he used completely different skull characters influenced by muscle development and environmental factors. This prevents a directly comparison to this study.

Further conclusions will not be meaningful until the divergence between completely separated populations will have been researched. Then the signs of a potential isolation could be estimated more precise.

However the present study gives a good view of the differentiation of otter populations in Eastern Germany by their non-metric skull characters. According to that there do not exist a general genetic insulation among the centres of otter occurrences in this area. They seem to live in reproductive contact until now, perhaps except the otters from the Baltic coast.

## SUMMARY

The craniometric variation and non-metric skull divergence between populations of the otter *Lutra lutra* (Linné, 1758) were studied using more than 430 skulls from different regions of Eastern Germany. No direct regional differences in skull measurements could be established for this area. The comparison of the morphological variation by non-metric skull characters adduces not or unimportant differentiations for most regions. Otter populations with greater geographic distances have partly higher measures of divergence. But only the population from the Baltic coast stand out against each other with a relative important epigenetic distance. Until now there does not exist a general reproductive and genetic insulation between the otter populations of Eastern Germany.

**ACKNOWLEDGEMENTS** – We are very grateful to A. Feiler (Staatliches Museum für Tierkunde Dresden), D. Heidecke (Zoologisches Institut der Universität Halle), H. Reichstein (Institut für Haustierkunde der Universität Kiel), C. Reuther (Otter Zentrum Hankensbüttel), S. Robel (Naturkundemuseum Cottbus) and O. Zinke (Museum der Westlausitz Kamenz) for the generously access to their collections.

## REFERENCES

- ANSORGE, H. (1992).** Craniometric variation and nonmetric skull divergence between populations of the Pine marten, *Martes martes*. *Abh. Ber. Naturkundemus. Görlitz* **66** (7): 9-24
- ANSORGE, H. (in press).** **Notizen zur Altersbestimmung am Säugetierschädel. Friedrichsbrunn.**
- ANSORGE, H., STRIESE, M. (1993).** Zum Bestand des Fischotters in der östlichen Oberlausitz. *Abh. Ber. Naturkundemus. Görlitz* **67**(5): 13-19.
- BERRY, A. C. (1975).** Factors affecting the incidence of non-metrical skeletal variants. *J. Anat.* **120**: 519-535.
- BREE, P. J. H. van, JENSEN, B., KLEIJN, L. J. K. (1966).** Skull Dimensions and the Length/Weight Relation of the Baculum as Age Indications in the Common Otter *Lutra lutra* (Linnaeus, 1758). *Danish Rev. Game Biol.* **4**: 97-104.
- DOLCH, D., TEUBNER, J., TEUBNER, J. (1993).** Der Fischotter im Land Brandenburg. *Naturschutz und Landschaftspflege in Brandenburg*, 1/1993: 33-37.
- DRIESCH, A. v. d. (1976).** Das Vermessen von Tierknochen aus vor- und frühgeschichtlichen Siedlungen. München.
- DRISCOLL, K. M., JONES, G. S., NICHY, F. (1985).** An Efficient Method by which to Determine Age of Carnivores, using Dentine Rings. *J. Zool.* **205**: 309-313.
- HEGGBERGET, T. M. (1984).** Age Determination in the European Otter *Lutra lutra lutra*. *Z. Säugetierk.* **49**: 299-305.
- HILBORN, R. (1974).** Inheritance of Skeletal Polymorphism in *Microtus californicus*. *Heredity* **33**: 87-121.
- HYSING-DAHL, C. (1959).** The Norwegian Otter *Lutra lutra* (L.): a Craniometric Investigation. *Univ. Bergen, Arbok* **5**: 1-44.
- KOREY, K. A. (1980).** The Incidence of Bilateral Nonmetric Skeletal Traits: a Reanalysis of Sampling Procedures. *American J. Physical Anthropol.* **53**: 19-23.
- LABES, R., LABES, H., KUDLA, W., BINNER, U. (1989).** Zur Besiedlung des Kreises Schwerin durch den Fischotter. *Wiss. Beitr. Univ. Halle*, **37** (P 39): 111-120.

- REIG, S., RUPRECHT, A. L. (1989).** Skull Variability of *Martes martes* and *Martes foina* from Poland. *Acta theriol.* **34**: 595-624.
- REUTHER, C. (1992).** Otter 2000. Eine Vision für den Otterschutz in Deutschland. In: **REUTHER, C.:** Otterschutz in Deutschland. *Habitat*, **7**: 113-126.
- RICHTSMEIERS, J. T., MCGRATH, J. W. (1986).** Quantitative Genetics of Cranial Nonmetric Traits in Randombred Mice: Heritability and Etiology. *American J. Physical Anthropol.* **69**: 51-58.
- ROHLF, F. J. (1994).** NTSYS-pc. Numerical Taxonomy and Multivariate Analysis System. New York.
- SIDOROVIC, V. E. (1990).** Analiz Ékologo-Morfologiceskoj Differenciacii Populacij Vydry (*Lutra lutra* L.) v Izolirovannyh Bassejnach Bolsich rek s Razlicnymi Uslovijami Obitanija. Minsk.
- SJOVOLD, T. (1977).** Non-Metrical Divergence between Skeletal Populations. *Ossa* **4** (1): 1-133.
- SKARÉN, U. (1987).** Skull Structure in Different Age Groups of Otters (*Lutra lutra*) in Central Finland. *Kumulus* **9**: 42-47.
- STUBBE, M. (1969).** Zur Biologie und zum Schutz des Fischotters *Lutra lutra* (L.). *Arch. Naturschutz Landschaftsforsch.*, **9**: 315-324.
- UTHLEB, H., STUBBE, M., HEIDECHE, D., ANSORGE, H. (1992).** Zur Populationsstruktur des Fischotters *Lutra lutra* (L. 1758) im Östlichen Deutschland. *Semiaquatische Säugetiere, Wiss. Beitr. Univ. Halle*, 1992, 393-400.
- WIIG, O., LIE, R. W. (1979).** Metrical and Non-Metrical Skull Variations in Norwegian Wild Mink (*Mustela vison*, Schreber). *Zool. Scripta* **8**: 297-300.
- WIIG, O., ANDERSEN, J. M. (1988).** Non-Metrical Variation in the Skull of Norwegian Lynx. *Acta Theriol.* **33**: 3-19.
- ZEJDA, J., VOSKAR, J. (1987).** Taxonomy of the European Otter (*Lutra lutra*) in Czechoslovakia. *Folia Zoologica* **36**: 111-120.